

Vibratory Motors



SAIDEEP

Technology that lays the foundation of your dreams

GENERAL

Saideep Unbalance Motors Generate Rotary centrifugal force due to Unbalance weights fixed on either side of Motor. This centrifugal force sets the whole mass vibrating. The Frequency of vibration depends on the mass being vibrated.

FEATURES

- Robust Design : Body Made from high grade SG Iron Casting or Aluminium.
- Totally dust proof air cooled design : Can Operate in dusty environments. Complies to IP.55 & IP.66 specification.
- Winding H-Class : Impervious to dust, moisture and vibrations.
- Vibrations force adjustable : From zero to maximum by adjusting position of Unbalance weights provided on both sides of the motor shaft.
- Wide Range : From 2 to 6 Pole with various standard Models.
- Silent operation : Unlike Electromagnetic Vibration, SAIDEEP Vibrators make no unpleasant sound.
- Service : Continuous service (S1) and intermittent operation at maximum Centrifugal force.
- Tropicalizing : Motor winding is Vacuum impregnated.
- Terminal Box : Terminal Box connector sealed with layer of resin to prevent damage due to vibrations.
- Drive Shaft : Made from over sized alloy steel to stand, stress at high speeds.
- Centrifugal force from 270 to 130000
- Power consumption - 40 watts to - 10000 watts
- Maximum vibratory mass 5500 kg.
- Power Input 415 V - 3 Phase A.C.
- Bearings : All bearings used are of NSK Japan / FAG make.

Application :

- Silos
- Hoppers
- Vibrating Feeders
- Screens
- Piping
- Threshers
- Dump Trucks

Industries that may require

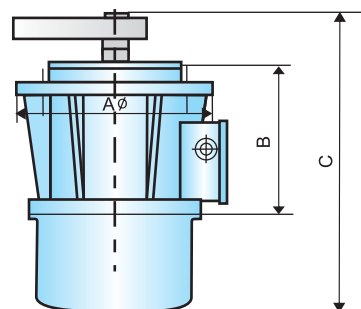
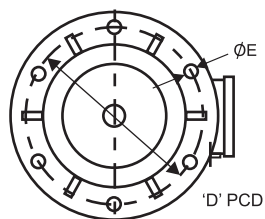
- Food
- Animal Feed
- Fertilizers
- Agriculture
- Pharmaceuticals
- Chemicals
- Plastics
- Cement
- Glass
- Air Treatment
- Automotive
- Mining

Benefits :

- Safe
- Economic
- Robust
- Reliable
- Easy to Install
- High Performance
- Global Availability
- Increased Productivity

Precaution

- i) Vibrators should be installed on flat surface, else local forces may develop causing breakage of legs or flanges.
- ii) Vibrating force on both ends of the Motor shaft should be adjusted equally otherwise the operation will be erratic.
- iii) Although the bearings are prelubricated. Please pay special attention to lubrications as per the instruction manual.

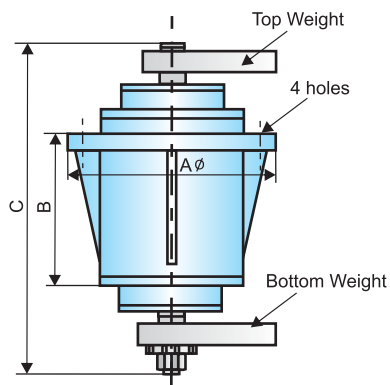
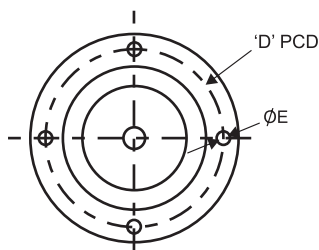


Flange Mounting

(Enclosure : IP-66)

TECHNICAL CHART OF VIBRATING MOTOR

Model	Electrical Specifications		Mechanical Specifications			Dimensional Specifications				
	HP	Current	RPM	Force	Weight	A	B	C	D	E
		A		N	kg.	mm	mm	mm	mm	mm
SM 30	0.5	1	1440	4000	25	230	175	360	195	14



Flange Mounting

(Enclosure : IP-55)

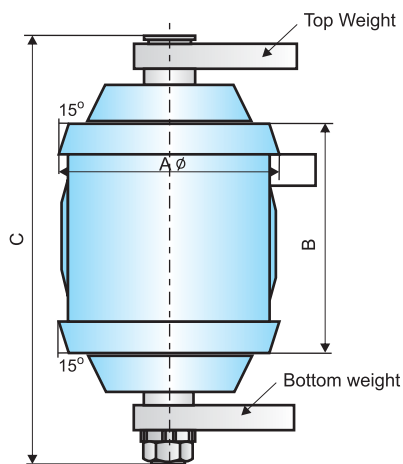
TECHNICAL CHART OF VIBRATING MOTOR

Model	Electrical Specifications		Mechanical Specifications			Dimensional Specifications				
	HP	Current	RPM	Force	Weight	A	B	C	D	E
		A		N	kg.	mm	mm	mm	mm	mm
SM 1	0.16	0.6	3000	1200	19.7	150	140	305	130	14
SM 2	0.25	0.7	1440	2000	20.40	195	135	325	165	14
SM 3	0.5	1	1440	4000	28.7	230	155	355	195	14
SM 4	1	1.5	1440	8000	43.5	250	180	390	215	14

Wedge Mounting

(Enclosure : IP-55)

TECHNICAL CHART OF VIBRATING MOTOR



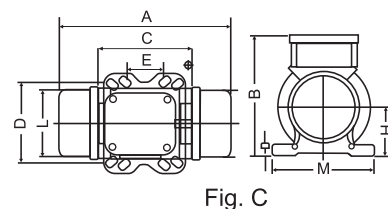
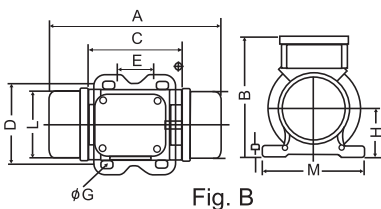
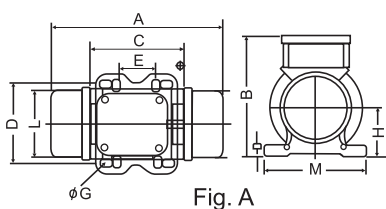
Model	Electrical Specifications		Mechanical Specifications			Dimensional Specifications		
	HP	Current	RPM	Force	Weight	A	B	C
		A		N	kg.	mm	mm	mm
SW 1	1.5	2	1440	16000	59.3	238	178	452
SW 2	2	3	1440	25000	107.4	284	228	536
SW 3	3	5	1440	40000	135	284	228	546
SW 5	5	7.5	1000	65000	165.4	315	340	638
SW 7	7.5	10	1000	77000	168.3	315	340	638



2 Pole Motor : Foot Mounted

Model No.	Centrif. Force N		Working Moment kg/cm		Power kw		Current A max.		Suitable for Vibrating Max Weight of.
	50 Hz	60 Hz	50 Hz	60 Hz	50 Hz	60 Hz	50 Hz	60 Hz	Kgs.
3000 rpm 230/415 Volts 50 Hz & 3600 rpm 260/460 Volts 60 Hz									Enclosure : IP-66
SA 60	660	670	1.35	0.82	0.08	0.09	0.16	0.18	50
SA 100	980	1080	2.01	1.52	0.1	0.11	0.19	0.18	55
SA 200	1870	1890	3.72	2.61	0.18	0.21	0.35	0.35	75
SA 300	3200	3230	6.19	4.46	0.27	0.28	0.52	0.45	175
SA 400	4000	4110	7.96	5.68	0.3	0.36	0.58	0.6	225
SA 500	5200	5340	10.27	7.38	0.5	0.58	0.96	0.97	300
SA 700	7500	7650	14.9	10.57	0.66	0.75	1.25	1.24	375
SA 800	7700	8000	15.68	11.06	0.75	0.9	1.45	1.5	500
SA 1200	9800	10130	20.26	14	0.95	1.15	1.85	1.95	750
SA 1300	13300	13650	27.58	18.86	1.3	1.38	2.44	2.25	850
SA 1600	15600	16080	31.26	22.2	1.57	1.6	2.94	2.61	960
SA 2000	19800	19970	36.78	27.6	2	2.1	3.75	3.42	1200
SA 2300	22500	23060	45.97	31.87	2.4	2.45	4.44	3.94	1350
SA 3200	32520	33750	68.1	43.89	2.9	2.92	5.3	4.6	1900
SA 4000	40000	40500	79.4	55.99	2.9	2.92	5.3	4.6	2150
SA 5000	50000	50500	103.24	69.76	4	4.1	7.2	6.28	2300
SA 6500	65000	65550	129.55	90.54	5.5	5.52	9.5	8	2750
SA 9000	90250	93750	179.59	129.55	10	10.3	14	18	3000
Enclosure : IP-55									
SA 1	900	910	1.85	1.68	0.13	0.14	0.4	0.5	75
SA 3	3000	3030	6	5.4	0.23	0.25	0.5	0.6	225
SA 4	3900	3940	8.1	7.4	0.37	0.4	0.6	0.7	270
SA 5	4800	4850	10.56	9.6	0.55	0.59	1	1.2	300
SA 6	6000	6060	12.5	11.4	0.75	0.8	1.5	1.8	360
SA 10	10000	10100	21	19.1	1	1.07	2	2.4	615
SA 16	16000	10160	32.5	29.6	1.4	1.5	2.5	2.8	960
SA 20	20000	20200	42.3	38.6	2	2.15	3.75	4	1200
SA 30	30000	30300	61	55.6	2.9	3.1	5.5	6	1750
SA 50	50000	50500	100	91.	6.1	6.5	7.5	8.5	2500

Note : The design and dimensions are subject to alteration without prior notice due to continuous development.



2 Pole Motor : Foot Mounted

Model No.	Fig.											No. of Holes	Weight kgs.	
		E	D	F	C	M	L	H	A	B	G		50 Hz	60 Hz
		mm	mm	mm	mm	mm	mm	mm	mm	mm	mm			
3000 rpm 230/415 Volts 50 Hz & 3600 rpm 260/460 Volts 60 Hz												Enclosure : IP-66		
SA 60	A	*	*	12	121	130	86	48	211	136	*	4	4.2	4.2
SA 100	A	*	*	12	121	130	86	48	211	136	*	4	4.6	4.6
SA 200	B	62-74	106	14	123	130	112	64	217	158	9	4	7	7
SA 300	C	**	**	14	165	155	132	80	259	175	**	4	9.8	9.8
SA 400	C	**	**	14	165	155	132	80	259	175	**	4	10.3	10.3
SA 500	D	105	140	22	178	168	158	92	338	196	13	4	15.8	15.8
SA 700	D	105	140	22	178	168	158	92	338	196	13	4	16.5	16.5
SA 800	D	120	170	22	205	209	170	94	311	210	17	4	20.6	20.6
SA 1200	D	120	170	22	205	209	170	94	397	210	17	4	21.6	21.6
SA 1300	D	120	170	22	205	209	170	94	397	210	17	4	22	22
SA 1600	D	140	190	30	220	228	221	120	448	247	17	4	51.6	51.2
SA 2000	D	140	190	30	220	228	221	120	448	247	17	4	52.8	52
SA 2300	D	140	190	30	220	228	221	120	448	247	17	4	53.6	51.6
SA 3200	D	155	255	35	273	302	264	147	538	318	25	4	103	101
SA 4000	D	155	255	35	273	302	264	147	538	318	25	4	107	104
SA 5000	D	155	255	35	273	302	264	147	538	318	25	4	111	106
SA 6500	D	200	320	50	325	385	378	200	605	410	28	4	228	224.5
SA 9000	D	200	320	50	325	385	378	200	605	410	28	4	240	234
												Enclosure : IP-55		
SA 1	D	67	100	30	98	130	120	62	232	147	9	4	7	7
SA 3	D	115	135	25	142	162	145	80	320	200	9	4	17	17
SA 4	D	115	135	25	142	162	145	80	320	200	11	4	20	20
SA 5	D	120	180	40	165	210	172	95	350	230	14	4	29	29
SA 6	D	120	180	40	165	210	172	95	374	230	14	4	30	30
SA 10	D	125	230	58	175	260	218	115	444	266	18	4	50	50
SA 16	D	125	230	58	175	260	218	115	494	266	18	4	60	60
SA 20	D	165	260	60	230	330	258	135	550	300	27	4	85	85
SA 30	E	140	290	60	345	355	310	160	725	338	27	6	140	140
SA 50	E	175	400	70	420	470	350	185	820	400	33	6	280	280

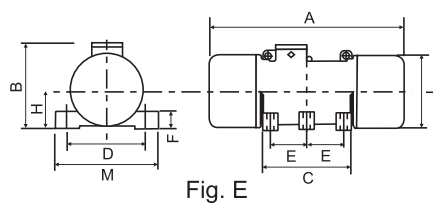
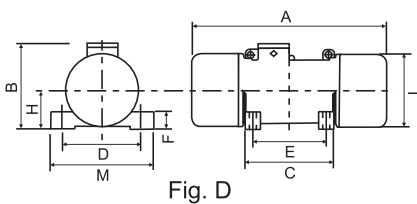


Fig. A

	E	D	φG
	mm	mm	mm
*	62-74	106	9
	33	83-102	7

Fig. C

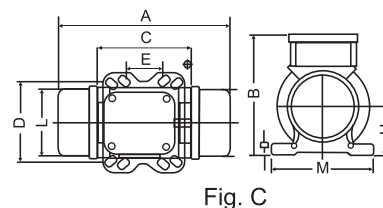
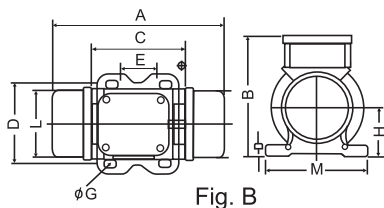
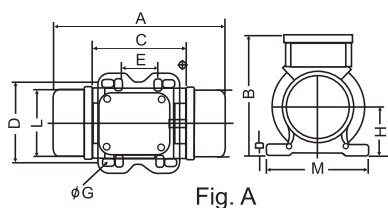
	E	D	φG
	mm	mm	mm
**	80	110	11
	90	125	13
	124	110	11
	135	115	11



4 Pole Motor : Foot Mounted

Model No.	Centrif. Force N		Working Moment kg/cm		Power kw		Current A max.		Sutaible for Vibrating Max Weight of. Kgs.
	50 Hz	60 Hz	50 Hz	60 Hz	50 Hz	60 Hz	50 Hz	60 Hz	
1440 rpm 230/415 Volts 50 Hz & 1800 rpm 260/460 Volts 60 Hz									
Enclosure : IP-66									
SB 40	270	360	2.15	1.99	0.04	0.05	0.31	0.31	50
SB 90	750	760	5.97	4.2	0.09	0.1	0.26	0.25	90
SB 200	1940	1960	15.44	10.83	0.16	0.17	0.49	0.5	130
SB 400	4200	4230	33.43	23.38	0.3	0.35	0.84	0.86	175
SB 500	5040	5080	40.12	28.08	0.35	0.4	1.16	1.09	225
SB 700	7140	7120	56.83	39.36	0.62	0.73	1.32	1.41	325
SB 1100	11140	11220	88.67	62.02	0.65	0.78	1.5	1.7	425
SB 1400	13640	13880	108.57	78.72	0.9	1.1	1.71	1.78	650
SB 1700	17250	16640	137.31	91.98	1.15	1.3	2.16	2.09	800
SB 2400	23580	24850	187.69	137.36	1.6	1.9	3	3.2	1000
SB 2500	25570	25570	203.53	135.65	1.8	2	3.4	3.4	1250
SB 3000	31240	30700	248.66	169.75	1.9	2.3	3.7	3.8	1500
SB 3800	38530	37040	306.69	204.74	2.2	2.6	4.12	4.15	1800
SB 4300	43120	43590	343.22	240.95	2.5	3	5.7	5.8	2000
SB 5500	54950	54950	437.39	303.74	3.6	3.45	6.5	6.6	2750
SB 7200	72460	71880	576.76	397.32	5	6	9.6	9.5	3250
SB 9000	90200	90230	717.97	498.76	7.5	8.5	12	12	3500
SB 10000	100520	106430	800.1	588.3	7.8	9.4	13	13	4200
Enclosure : IP-55									
SB 1	1000	1010	15.4	14	0.16	0.17	0.5	0.6	70
SB 2	2000	2020	22.5	20.5	0.19	0.2	0.6	0.7	90
SB 3	3000	3030	29.3	26.7	0.23	0.24	0.7	0.8	130
SB 4	4000	4040	34.5	31.4	0.37	0.4	1	1.1	170
SB 6	6000	6060	51.5	47	0.51	0.55	1.2	1.3	275
SB 8	8000	8080	63.35	57.8	0.75	0.8	1.4	1.5	350
SB 10	10000	10100	77.5	70.7	0.83	0.89	1.6	1.8	415
SB 16	16000	10160	130	118.6	1.1	1.2	2	2.3	730
SB 25	25000	25250	209	190.7	1.5	1.6	2.5	2.8	1190
SB 37	37000	37370	300	273.8	2.45	2.6	5	5.7	1700
SB 46	46000	46460	370	337.7	3	3.2	5.5	6.5	2200
SB 67	67000	67670	547	499	5.1	5.5	6	7.2	3175
SB 104	104000	105040	843	769	7.5	8	7.5	8.6	4500

Note : The design and dimensions are subject to alteration without prior notice due to continuous development.



4 Pole Motor : Foot Mounted

Model No.	Fig.											No. of Holes	Weight kgs.	
		E	D	F	C	M	L	H	A	B	G		50 Hz	60 Hz
		mm	mm	mm	mm	mm	mm	mm	mm	mm	mm			
1440 rpm 230/415 Volts 50 Hz & 1800 rpm 260/460 Volts 60 Hz												Enclosure : IP-66		
SB 40	A	*	*	12	121	130	86	48	223	140	*	4	5.2	5.2
SB 90	B	62-74	106	14	123	130	112	64	245	160	9	4	7.6	7.6
SB 200	C	**	**	14	165	155	132	80	295	185	**	4	11.7	11.7
SB 400	D	105	140	22	178	168	158	92	340	215	13	4	21.6	21.6
SB 500	D	105	140	22	178	168	158	92	340	215	13	4	22.9	22.9
SB 700	D	120	170	22	205	209	170	94	395	210	17	4	29	29
SB 1100	D	120	170	22	205	209	170	94	450	210	17	4	33.8	33.8
SB 1400	D	140	190	30	220	228	221	120	465	265	17	4	64	60.4
SB 1700	D	140	190	30	220	228	221	120	465	265	17	4	67.7	65.3
SB 2400	D	140	190	30	220	228	221	120	520	265	17	4	73.4	67.4
SB 2500	D	155	225	40	250	272	235	140	535	305	22	4	95	89
SB 3000	D	155	225	40	250	272	235	140	580	305	22	4	110	99
SB 3800	D	155	255	35	273	302	264	147	610	315	24	4	143	131
SB 4300	D	155	255	35	273	302	264	147	620	315	24	4	158	147
SB 5500	D	180	280	37	304	332	310	167	640	360	26	4	206	204
SB 7200	D	200	320	49	325	385	378	200	625	395	28	4	298	291
SB 9000	D	200	320	49	325	385	378	200	705	395	28	4	303	293
SB 10000	E	125	380	44	367	452	378	204	760	445	38	6	331	317
												Enclosure : IP-55		
SB 1	D	67	100	30	98	130	120	62	232	147	9	4	7.1	7.1
SB 3	D	115	135	25	142	162	145	80	320	200	11	4	18	18
SB 4	D	120	180	40	165	210	172	95	378	230	14	4	28	28
SB 5	D	120	180	40	165	210	172	95	378	230	14	4	30	30
SB 6	D	120	180	40	165	210	172	95	428	230	14	4	35	35
SB 8	D	120	180	40	165	210	172	95	453	245	14	4	45	45
SB 10	D	125	230	58	175	260	218	115	444	266	18	4	55	55
SB 16	D	125	230	58	175	260	218	115	494	266	18	4	70	70
SB 25	D	165	260	60	230	330	258	135	550	300	27	4	100	100
SB 37	E	140	290	60	345	355	310	160	725	338	27	6	155	155
SB 46	E	140	290	60	345	355	310	160	725	338	27	6	170	170
SB 67	E	175	400	70	420	470	350	185	820	400	33	6	285	285
SB 104	E	175	400	70	420	470	350	185	820	400	33	6	325	325

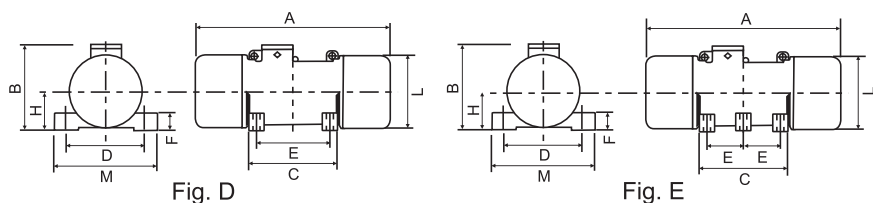


Fig. A

	E	D	φG
*	mm	mm	mm
	62-74	106	9
	33	83-102	7

Fig. C

	E	D	φG
**	mm	mm	mm
	80	110	11
	90	125	13
	124	110	11
	135	115	11



6 Pole Motor : Foot Mounted

Model No.	Centrif. Force N		Working Moment kg/cm		Power kw		Current A max.		Suitable for Vibrating Max Weight of. Kgs.
	50 Hz	60 Hz	50 Hz	60 Hz	50 Hz	60 Hz	50 Hz	60 Hz	
900 rpm 230/415 Volts 50 Hz & 1200 rpm 260/460 Volts 60 Hz Enclosure : IP-66									
SC 50	530	530	9.49	6.59	0.12	0.14	0.4	0.4	50
SC 100	1050	1060	18.81	13.18	0.12	0.14	0.4	0.4	60
SC 200	1870	1880	33.49	23.38	0.18	0.21	0.53	0.51	75
SC 300	2670	2690	47.82	33.46	0.35	0.38	0.67	0.64	100
SC 500	4750	4790	91.88	64.32	0.35	0.4	1.2	1.15	250
SC 600	6000	7300	132.4	120.8	0.35	0.38	0.75	0.68	275
SC 810	7940	8880	141.1	112.6	0.68	0.76	1.40	1.30	350
SC 800	7670	8730	137.37	108.58	0.68	0.76	1.29	1.26	350
SC 1100	10480	11040	187.37	137.31	0.75	0.8	1.42	1.32	400
SC 1500	15900	15800	284.76	196.51	1.1	1.3	2.1	2	600
SC 1600	16730	16360	299.6	203.47	1.1	1.3	2.83	3.22	650
SC 2100	20830	20000	373.05	248.74	1.5	1.8	3	3	825
SC 2600	26100	24650	467.44	306.7	1.96	2.1	3.63	3.38	1000
SC 3000	30170	30500	540.33	379.71	2.2	2.4	4.5	4.3	1250
SC 3800	38000	35175	680.38	437.41	2.5	3	4.67	4.88	1600
SC 4700	46800	46970	838.34	584.17	3.2	3.9	6.5	6	2000
SC 5200	51900	52630	929.86	654.57	3.8	4	6.92	6.36	2300
SC 6500	65000	66250	1165.2	823.96	4.3	5	7.76	7.81	2700
SC 8000	80200	74760	1436	929.8	7.1	7.5	12.6	11.6	3100
SC 9000	89350	93690	1600.4	1165.23	7.5	8.3	13.2	12.6	4000
SC 10000	99850	99700	1788.4	1239.98	7.6	8	13.5	12.7	4750
SC 13000	130000	13250	2329.8	1647.4	10	10	17	16	5500
Enclosure : IP-55									
SC 2	2000	2020	33.5	33.5	0.19	0.2	0.5	0.6	75
SC 3	3000	3030	48.35	44.1	0.4	0.43	1.2	1.3	100
SC 4	4000	4040	77.5	70.7	0.65	0.7	1.3	1.4	150
SC 6	6000	6060	132.4	120.8	0.75	0.8	1.4	1.55	275
SC 10	10000	10100	185	169	1	1.07	2	2.3	375
SC 11	11000	11110	209	190	1	1.07	2.5	2.8	400
SC 17	17000	17170	314	286	1.24	1.3	2.8	3.2	565
SC 23	23000	23230	418	381	1.67	1.8	3	3.7	930
SC 35	35000	35350	631	576	2.3	2.4	4	4.8	1440
SC 70	70000	70700	1278	1166	3.85	4.1	6	7	2950
SC 90	90000	90900	1640	1497	5.5	5.9	7.5	8.7	4000
SC 122	122000	123220	2250	2053	8.5	9.1	8	9.6	5500

Note : The design and dimensions are subject to alteration without prior notice due to continuous development.

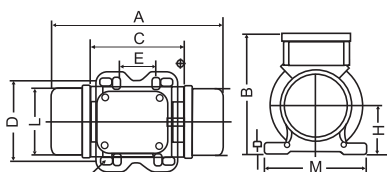


Fig. A

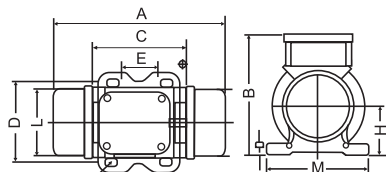


Fig. B

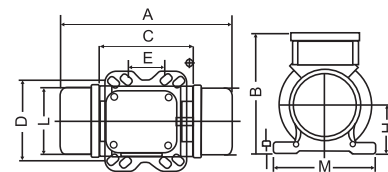


Fig. C

6 Pole Motor : Foot Mounted

Model No.	Fig.	E	D	F	C	M	L	H	A	B	G	No. of Holes	Weight kgs.	
		mm	mm	mm	mm	mm	mm	mm	mm	mm	mm		50 Hz	60 Hz
		900 rpm 230/415 Volts 50 Hz & 1200 rpm 260/460 Volts 60 Hz												Enclosure : IP-66
SC 50	C	**	**	14	165	155	132	80	295	185	**	4	10.8	10.8
SC 100	C	**	**	14	165	155	132	80	315	185	**	4	12.6	12.6
SC 200	D	105	140	22	178	168	158	92	340	215	13	4	21.4	21.4
SC 300	D	120	170	22	205	209	170	94	395	210	17	4	29	29
SC 500	D	120	170	22	205	209	170	94	450	210	17	4	33.7	33.7
SC 600	D	120	170	50	194	205	185	105	428	235	17	4	40.3	40.3
SC 810	D	140	190	45	190	230	204	116	500	246	17	4	55	52
SC 800	D	140	190	30	220	228	221	120	465	265	17	4	66.1	63.7
SC 1100	D	140	190	30	220	228	221	120	520	265	17	4	73	66.1
SC 1500	D	140	190	30	220	228	221	120	575	265	17	4	85.6	78.5
SC 1600	D	155	225	40	250	272	235	140	580	305	22	4	110.7	94
SC 2100	D	155	225	40	250	272	235	140	625	305	22	4	120	105
SC 2600	D	155	255	35	273	302	264	147	720	315	24	4	151	134
SC 3000	D	155	255	35	273	302	264	147	720	315	24	4	174	157
SC 3800	D	180	280	37	304	332	310	167	725	360	26	4	217	207
SC 4700	D	180	280	37	304	332	310	167	770	360	26	4	233	215
SC 5200	D	200	320	49	325	385	378	200	705	395	28	4	299	284
SC 6500	D	200	320	49	325	385	378	200	705	395	28	4	331	307
SC 8000	D	200	320	49	325	385	378	200	810	395	28	4	344	309
SC 9000	D	200	320	49	325	385	378	200	810	395	28	4	357	327
SC 10000	E	125	380	44	367	452	378	204	855	445	38	6	386	360
SC 13000	E	125	380	44	367	452	378	204	955	445	38	6	423	375
Enclosure : IP-55														
SC 2	D	115	135	25	142	162	145	80	320	200	11	4	20	20
SC 3	D	120	180	40	165	210	172	95	378	230	14	4	30	30
SC 4	D	120	180	40	165	210	172	95	428	230	14	4	35	35
SC 6	D	120	180	40	165	210	172	95	453	245	14	4	45	45
SC 10	D	125	230	58	175	260	218	115	494	266	18	4	73	73
SC 11	D	165	260	60	230	330	258	135	575	300	27	4	95	95
SC 17	D	165	260	60	230	330	258	135	600	300	27	4	110	110
SC 23	D	165	260	60	230	330	258	135	672	300	27	4	132	132
SC 35	E	140	290	60	345	355	310	160	730	338	27	6	180	180
SC 70	E	140	290	95	395	355	350	195	870	372	27	6	225	225
SC 90	E	175	400	70	420	470	350	185	900	400	33	6	360	360
SC 122	E	175	400	70	420	470	415	210	905	425	33	6	425	425

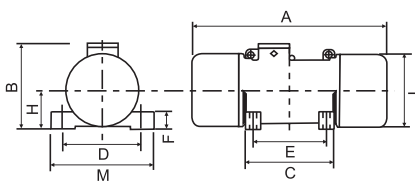


Fig. D

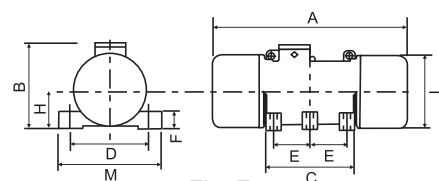


Fig. E

Fig. A

	E	D	φG
	mm	mm	mm
*	62-74	106	9
	33	83-102	7

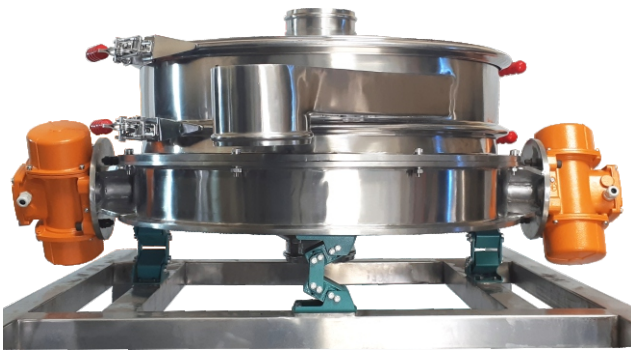
Fig. C

	E	D	φG
	mm	mm	mm
**	80	110	11
	90	125	13
	124	110	11
	135	115	11

Some Application of Our Vibro Motors

Unbalance Motors have wide applications where vibration force is desired. Its operation is noiseless as compared to electromagnetic vibration and pneumatic Vibration.

It is widely used in continuous process plants eg. Chemicals, Fertilizers, Petrochemical, Pharmaceutical, Plastic, Mining, Food Processing and Packaging Industries.



Vibro Screen With Oscillation Mounts



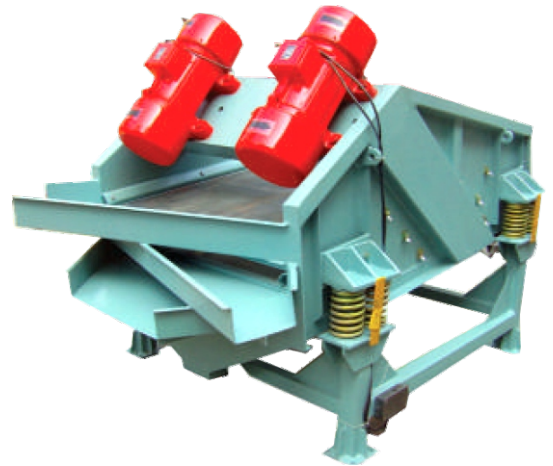
Circular Vibro Screen



Spiral Elevator



Portable Vibro Screen



Rectangular Screen



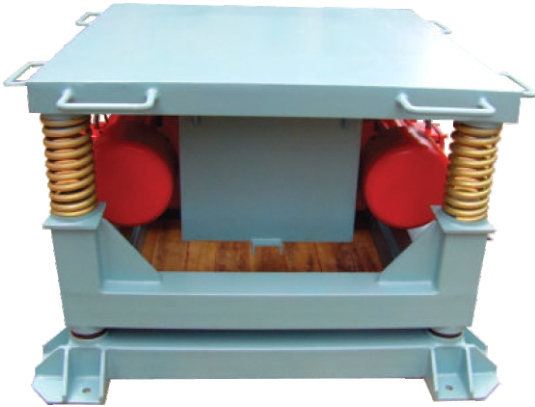
Tubular Feeder



Motorised Vibrating Conveyor



Vibratory Conveyor



Vibrating Table



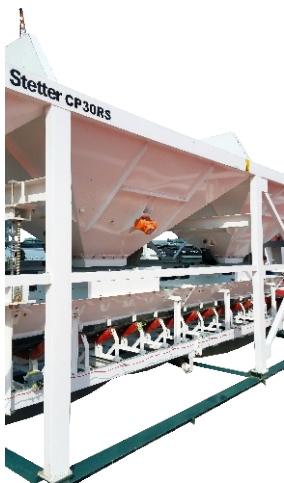
Motorised Vibratory Feeder



Rectangular Vibrating Screen



Inline Vibro Screen

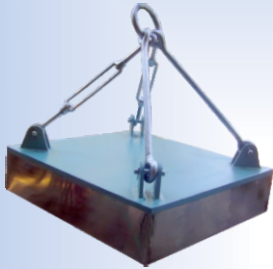


Hopper Silo Vibrator



Bin Activator

Our Other Products



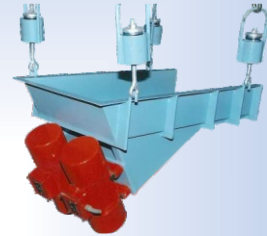
Suspension Magnet



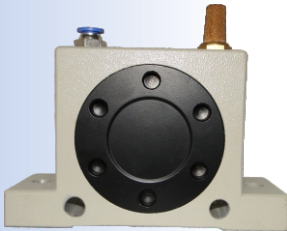
Wet Drum Magnetic Separator



Drum Type Magnetic Separator



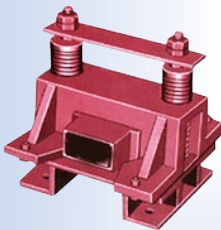
Vibrating Conveyors / Feeders



Pneumatic Vibrators



Vibrating Screen



Impact Type Vibrator



Magnetic Hump



Magnetic Inline Pipe Filter



Linear Feeder



SAIDEEP

Technology that lays the foundation of your dreams

Office :

A-11, Laghu Udyog Kendra, I. B. Patel Road, Goregaon (East), Mumbai - 400 063.
 Phones : (022) 2685 5799 / 2685 5843 • Mobile : 9867024201
 Email : sales@saideeponline.com / saideep55@yahoo.com
 Website : www.saideeponline.com

Factory :

Plot No. 17 & 18, The Palghar Taluka Inds. Co-op. Estate Ltd., Palghar Boisar road,
 Palghar (West) 401 404.

